

REPAIR CLAMP SINGLE BAND 3 STUDS LENGTH 200mm DUCTILE IRON / STAINLESS STEEL / EPDM

PRODUCT EVOLUTION



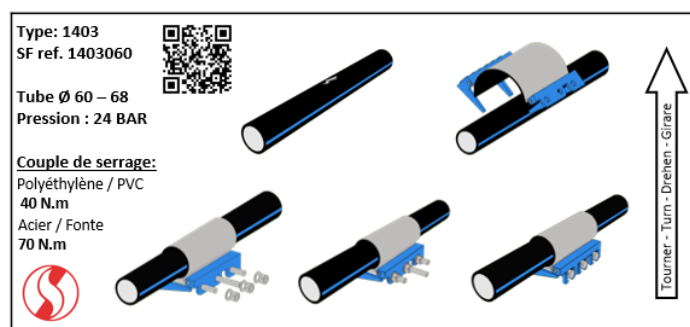
Be careful, our repair clamp are changing

**We currently have 2 different types available (according to DN)
with different max pressure**

Marking before :



Marking new type :



At the end, only the new type will be available (from page 2 to 5)

REPAIR CLAMP SINGLE BAND 3 STUDS LENGTH 200mm DUCTILE IRON / STAINLESS STEEL / EPDM

Stainless steel repair clamp single band 3 studs for drinking water.
Stainless steel AISI 304 insert and EPDM gasket.
For rigid pipes (PE, PVC, carbon steel and ductile iron).



NEW TYPE



Size : DN48 to DN285
Connection : For rigid pipes
Min Temperature : -10°C
Max Temperature : +60°C (for temporarily use)
Max Pressure : 16 Bars max up to DN210/223
Specifications : EPDM gasket
Stainless steel insert
3 Studs, single band
200 mm long

Materials : AISI 304 insert

REPAIR CLAMP SINGLE BAND 3 STUDS LENGTH 200mm DUCTILE IRON / STAINLESS STEEL / EPDM

SPECIFICATIONS :

- AISI 304 belt
- EPDM gasket
- 3 studs, single band
- For PE, PVC, steel and ductile iron pipes

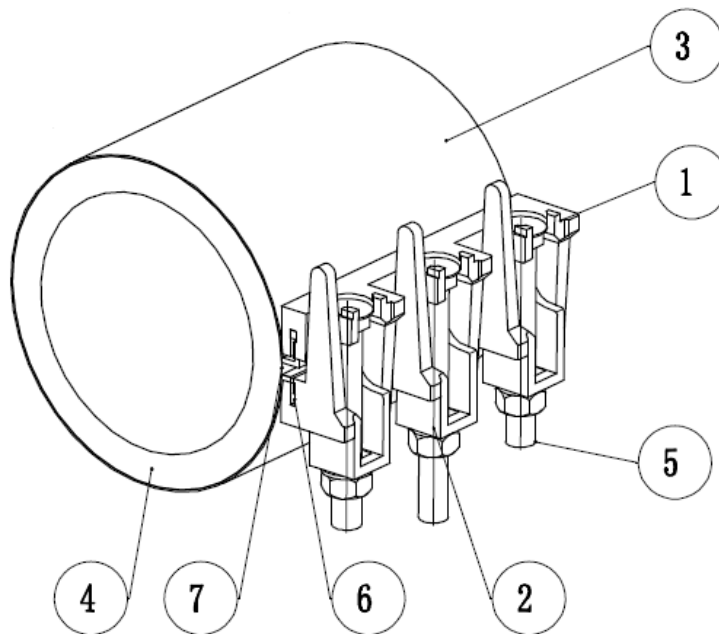
USE:

- Drinkable water
- Min and max Temperature Ts : - 10°C to + 60°C (for temporarily used)
- Max pressure Ps : see dimension table page 4

RANGE :

- Repair clamp 3 studs single band, length 200 mm with EPDM gasket **Ref.1403** from DN 48 to DN 285

MATERIALS :



Item	Designation	Materials
1	Upper Clamp	Ductile iron EN GJS-450-12
2	Lower Clamp	
3	Band cover	AISI 304
4	Rubber seal gasket	EPDM (ACS)
5	Bolting	Carbon steel Class 8.8 with Geomet 500 Grade B coating
6	Pin	AISI 304
7	Insert	

REPAIR CLAMP SINGLE BAND 3 STUDS LENGTH 200mm DUCTILE IRON / STAINLESS STEEL / EPDM
SIZE AND BOLTING TIGHTENING TORQUES :

Ref.	Ø external pipe		Bolting tightening torques (Nm)	Ps (Bar)	Weight (Kg)
	Mini	Maxi			
1403048	48	56	50	16	3.85
1403056	56	64			3.75
1403060	60	68			3.9
1403068	68	78			3.95
1403078	78	88			4
1403088	88	98	60		4.05
1403098	98	108			4.2
1403108	108	118			4.25
1403114	114	126			4.35
1403126	126	138			4.6
1403138	138	150			4.7
1403140	140	153			4.7
1403150	150	162			4.8
1403162	162	174			4.9
1403168	168	182			4.95
1403174	174	186	70	5.1	
1403186	186	198		5.15	
1403198	198	210		5.2	
1403210	210	223		5.5	
1403222	222	234		10	5.4
1403234	234	246			5.65
1403243	243	255			5.8
1403273	273	285	80		5.95

REPAIR CLAMP SINGLE BAND 3 STUDS LENGTH 200mm DUCTILE IRON / STAINLESS STEEL / EPDM**STANDARDS :**

- Manufacturer certified ISO 9001 : 2015
- Directive 2014/68/EU : Products excluded from directive (Article 1, § 2b)
- French water agreement **A.C.S. N° 18 MAT LY 583**

ADVICE : Our opinion and our advice are not guaranteed and SFERACO shall not be liable for the consequences of damages. The customer must check the right choice of the products with the real service conditions.

INSTALLATION INSTRUCTIONS**1.1 Storage**

The equipment has to be stored in covered places, protected from the sun, rain and all other atmospheric agents. Moreover it has to be avoided that the seal comes in contact with dust and dirt.

1.2 Installation

The structure and the construction method allow a good facility and fast assembly of the collar on the pipe to repair.

Here follow are described the operations to carry out during the installation:

1. Clean the part of the pipe to be repair from eventual soil deposits;
2. Position the repair clamp in correspondence with the cut or the hole;
3. Ensure that the tapered end of the gasket is not folded on itself in any point, and that it is well extended on the pipeline to be repaired;

Note: we suggest greasing the tapered end with soapy water, grease or Vaseline.

4. Put the opposite terminal of the clamp on the tapered end.
5. To insert the threaded studs in the respective positions of the buttonholes and manually shut.
6. Rotate the repair clamp in the indicated direction by the arrow printed on the label (indispensable operation for the definitive correct extension of the tapered end) possibly making sure that the damaged section of the pipeline remains under the section of vulcanized plate in the gasket.
7. Uniformly and gradually tighten the three or more screws so that the two clamps come together during the tightening, always parallel to each other according to the recommended tightening torque.

Note: make sure during this phase that the vulcanized welt sheet in the gasket, does not strain and it keeps its preformed bend: if it strains, it will compromise the seal.

REPAIR CLAMP SINGLE BAND 3 STUDS LENGTH 200mm DUCTILE IRON / STAINLESS STEEL / EPDM

Stainless steel repair clamp 3 studs for drinking water.
Stainless steel AISI 304 insert and EPDM gasket.
For rigid pipes (PE, PVC, carbon steel and ductile iron).



Size : DN48 to DN285
Connection : For rigid pipes
Min Temperature : -10°C
Max Temperature : +60°C (for temporarily use)
Max Pressure : 32 Bars max for DN48/56
Specifications : EPDM gasket
Stainless steel insert
3 Studs
200 mm long

Materials : AISI 304 insert

REPAIR CLAMP SINGLE BAND 3 STUDS LENGTH 200mm DUCTILE IRON / STAINLESS STEEL / EPDM

SPECIFICATIONS :

- AISI 304 belt
- EPDM gasket
- For PE, PVC, steel and ductile iron pipes

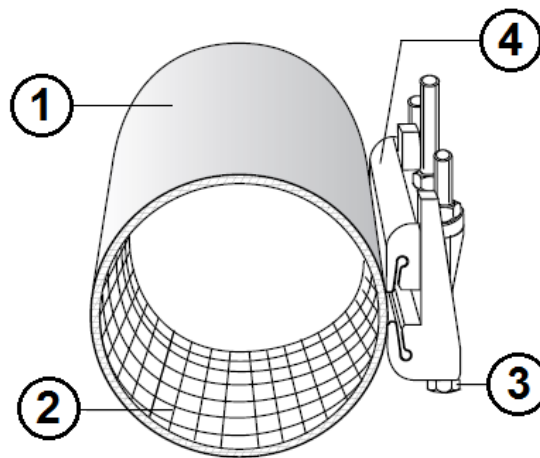
USE:

- Drinkable water
- Min and max Temperature Ts : - 10°C to + 60°C (for temporarily used)
- Max pressure Ps : see dimension table page 8

RANGE :

- Repair clamp single band type B, 3 studs, length 200 mm with EPDM gasket **Ref.1403** from DN 48 to DN 285

MATERIALS :



Item	Designation	Materials
1	Insert	AISI 304
2	Gasket	EPDM (ACS)
3	Bolting	Carbon steel 6.S
4	Clamp	Ductile iron EN GJS-500-7

REPAIR CLAMP SINGLE BAND 3 STUDS LENGTH 200mm DUCTILE IRON / STAINLESS STEEL / EPDM
SIZE(in mm) :

Ref.	Ø external pipe		Ps (Bar)	Weight (Kg)
	Mini	Maxi		
1403048	48	56	32	3.6
1403056	56	64	31	3.7
1403060	60	68	30	3.8
1403068	68	78	29	3.9
1403078	78	88	28	4
1403088	88	98	26	4.1
1403098	98	108	25	4.15
1403108	108	118	23	4.15
1403114	114	126	22.5	4.3
1403126	126	138	21.5	4.35
1403138	138	150	20	4.45
1403140	140	153	20	4.45
1403150	150	162	19	4.5
1403162	162	174	17	4.6
1403168	168	182	16.5	4.65
1403174	174	186	16	4.7
1403186	186	198	15	4.8
1403198	198	210	13.5	4.85
1403210	210	223	13	4.95
1403222	222	234	12	5.05
1403234	234	246	11	5.2
1403243	243	255	10.5	5.35
1403273	273	285	9	5.5

REPAIR CLAMP SINGLE BAND 3 STUDS LENGTH 200mm DUCTILE IRON / STAINLESS STEEL / EPDM**STANDARDS :**

- Manufacturer certified ISO 9001 : 2015 and ISO 14001 : 2015
- Directive 2014/68/EU : Products excluded from directive (Article 1, § 2b)
- French water agreement **A.C.S. N° 19 MAT NY 092**

ADVICE : Our opinion and our advice are not guaranteed and SFERACO shall not be liable for the consequences of damages. The customer must check the right choice of the products with the real service conditions.

INSTALLATION INSTRUCTIONS**1.3 Storage**

The equipment has to be stored in covered places, protected from the sun, rain and all other atmospheric agents. Moreover it has to be avoided that the seal comes in contact with dust and dirt.

1.4 Installation

The structure and the construction method allow a good facility and fast assembly of the collar on the pipe to repair.

Here follow are described the operations to carry out during the installation:

8. Clean the part of the pipe to be repair from eventual soil deposits;
9. Position the repair clamp in correspondence with the cut or the hole;
10. Ensure that the tapered end of the gasket is not folded on itself in any point, and that it is well extended on the pipeline to be repaired;

Note: we suggest greasing the tapered end with soapy water, grease or Vaseline.

11. Put the opposite terminal of the clamp on the tapered end.
12. To insert the threaded studs in the respective positions of the buttonholes and manually shut.
13. Rotate the repair clamp in the indicated direction by the arrow printed on the label (indispensable operation for the definitive correct extension of the tapered end) possibly making sure that the damaged section of the pipeline remains under the section of vulcanized plate in the gasket.
14. Uniformly and gradually tighten the three or more screws so that the two clamps come together during the tightening, always parallel to each other according to the recommended tightening torque.

Note: make sure during this phase that the vulcanized welt sheet in the gasket, does not strain and it keeps its preformed bend: if it strains, it will compromise the seal.