

PRESSURE GAUGE - PUSH BUTTON VALVE



DRUCK & TEMPERATUR

for gases

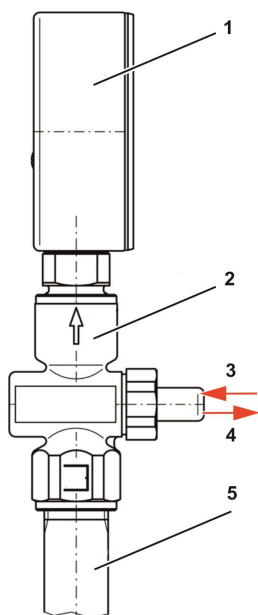
for manual pressure display on a pressure gauge

Push-button valves serve as a shut-off device between the measuring line and the pressure gauge.
 In the normal state, the push button valve is closed.
 The pressure gauge is thus permanently relieved of pressure.
 The push button is operated to pressurise the pressure gauge and display the operating pressure.



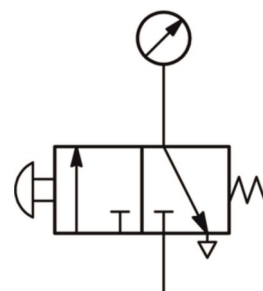
| Type | 28 061 | 28 151 | Options |
|-----------------------|--|-------------------------------|-------------------|
| Connection input | Female Rp1/4" acc.to EN 10226 | Female Rp1/2" acc. to ISO 7-1 | others on request |
| Connection output | Female Rp1/4" acc. to EN 10226 | Female G1/2" acc. to ISO 228 | others on request |
| Nominal pressure | 5 bar (MOP 5) | | |
| Operating pressure | PN 10 | | |
| Case | Brass, nickel plated | | others on request |
| Operating temperature | -20°C up to +60°C | | |
| CE-registry | according to the current gas appliance directive | | |
| Certificate | DVGW and SVGW tested | | |

Installation graphic



- 1 Pressure gauge
- 2 Push button valve
- 3 Display pressure
- 4 Display pressure
- 5 Supply line

Circuit diagram



1. Actuate the push-button piston as far as it will go.
 The path of the system pressure to the pressure gauge is released and the pressure display can be read.
2. Release the push button.
 The spring pressure returns the push button to its original position and separates the system pressure from the pressure gauge. The gas contained in the pressure gauge is released into the environment.

Type 28

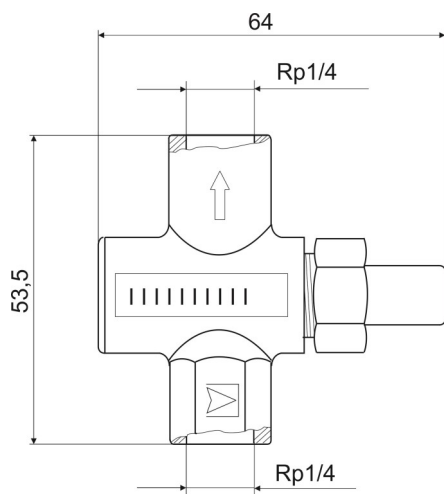
Dimensional drawing

Dimensions in mm



DRUCK & TEMPERATUR

Type 28 061



Type 28 151

